



LUMENT

MULTIFAMILY HOUSING SOLUTIONS

Lument's dedicated Multifamily Team has the programs, partnerships, and intellectual capital needed to deliver flexible, tailored loans with unrivaled responsiveness.

With loans starting at \$1 million and no program limits, we offer competitively priced non-recourse financing across the full suite of Fannie Mae, Freddie Mac, and FHA product lines, as well as our own proprietary capital solutions.

RECENT CLOSINGS

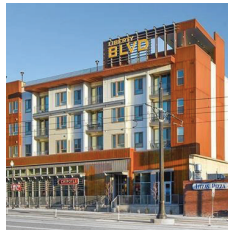


\$34.2M

FREDDIE MAC
REFINANCE

🏠 242 UNITS

📍 HOUSTON, TX



\$39M

FHA 223(A)(7)
REFINANCE

🏠 266 UNITS

📍 SALT LAKE CITY, UT



\$71.3M

FREDDIE MAC
LEASE UP

🏠 356 UNITS

📍 NORTH MIAMI
BEACH, FL



\$27.4M

PROPRIETARY
BRIDGE LOAN
ACQUISITION

🏠 280 UNITS

📍 CHATTANOOGA, TN

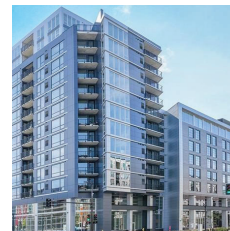


\$24.3M

FANNIE MAE DUS®
REFINANCE

🏠 97 UNITS

📍 ANAHEIM, CA



\$43M

FANNIE MAE DUS®
REFINANCE

🏠 172 UNITS

📍 MINNEAPOLIS, MN

OUR LOAN PROGRAMS

FANNIE MAE DUS®

- Fixed-Rate
- Variable-Rate
- Choice Refinance
- ARM, Hybrid ARM and Structured ARM
- Credit Facilities
- Mod Rehab
- Near-Stabilization Execution
- Streamlined Rate Lock
- Supplemental Loans
- Cooperative Housing
- Green Financing
- Healthy Housing Rewards™
- Small Loans
- And more

FREDDIE MAC OPTIGO®

- Fixed-Rate
- Floating-Rate
- Mod Rehab
- Lease-Up
- Value-Ad
- Supplemental Loan
- Float-to-Fixed (Two Plus Seven)
- Early Rate Lock or Index Lock
- Green Financing
- Small Balance Loans
- And more

FHA MULTIFAMILY

- Section 223(f) Acquisition or Refinance
- Section 221(d) New Construction or Substantial Rehab
- Section 223(a)(7) Refinance of Existing FHA Loans
- Section 241(a) Supplemental Loans for Renovation

PROPRIETARY CAPITAL SOLUTIONS

- Bridge Loan Program
- Preferred Equity
- Mezzanine Loans

UNRIVALED FLEXIBILITY, TAILORED FOR YOU

Lument is a nationally recognized leader in the multifamily space, with the full scope of agency, FHA, and proprietary loan solutions. Our multifamily professionals are dedicated to seamlessly arranging the right product and terms for your unique business goals. From new construction, to lease up, to permanent financing, value-add, or cash-out refinance – we have your community covered for its lifetime.

ACCOLADES

TOP
10

TOP 10
Non-Bank Multifamily Lender

#1

#1 FHA
Multifamily Lender*



WE SHINE WITH SERVICE

Our team of dedicated multifamily originators and underwriters work across the nation to provide personal, transparent, and trusted customer service. We are firm believers that the close of a transaction is just the beginning of the relationship. To ensure success throughout the life of the loan, we service our entire \$46+ billion loan portfolio in-house, and are committed to cultivating open and consistent communication with our clients. To us, lending means much more than a loan.



LUMENT.COM

ORIX Real Estate Capital Holdings, LLC, d/b/a Lument, is a subsidiary of ORIX Corporation USA. Securities, investment banking, and advisory services are provided through OREC Securities, LLC, d/b/a Lument Securities. Member FINRA/SIPC.

*Mortgage Bankers Association's 2019 CRE Originations Rankings.