



# LUMENT

## MULTIFAMILY HOUSING SOLUTIONS

Lument's dedicated Multifamily Team has the programs, partnerships, and intellectual capital needed to deliver flexible, tailored loans with unrivaled responsiveness.

With loans starting at \$1 million and no program limits, we offer competitively priced non-recourse financing across the full suite of Fannie Mae, Freddie Mac, and FHA product lines, as well as our own proprietary capital solutions.

### RECENT CLOSINGS



**\$34.2M**

**FREDDIE MAC  
REFINANCE**

🏠 242 UNITS

📍 HOUSTON, TX

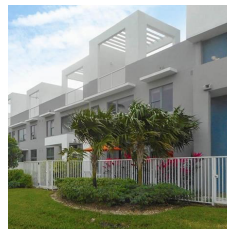


**\$39M**

**FHA 223(A)(7)  
REFINANCE**

🏠 266 UNITS

📍 SALT LAKE CITY, UT



**\$71.3M**

**FREDDIE MAC  
LEASE UP**

🏠 356 UNITS

📍 NORTH MIAMI  
BEACH, FL



**\$27.4M**

**PROPRIETARY  
BRIDGE LOAN  
ACQUISITION**

🏠 280 UNITS

📍 CHATTANOOGA, TN

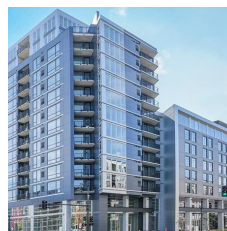


**\$24.3M**

**FANNIE MAE DUS®  
REFINANCE**

🏠 97 UNITS

📍 ANAHEIM, CA



**\$43M**

**FANNIE MAE DUS®  
REFINANCE**

🏠 172 UNITS

📍 MINNEAPOLIS, MN

### OUR LOAN PROGRAMS

#### FANNIE MAE DUS®

- Fixed-Rate
- Variable-Rate
- Choice Refinance
- ARM, Hybrid ARM and Structured ARM
- Credit Facilities
- Mod Rehab
- Near-Stabilization Execution
- Streamlined Rate Lock
- Supplemental Loans
- Cooperative Housing
- Green Financing
- Healthy Housing Rewards™
- Small Loans
- And more

#### FREDDIE MAC OPTIGO®

- Fixed-Rate
- Floating-Rate
- Mod Rehab
- Lease-Up
- Value-Ad
- Supplemental Loan
- Float-to-Fixed (Two Plus Seven)
- Early Rate Lock or Index Lock
- Green Financing
- Small Balance Loans
- And more

#### FHA MULTIFAMILY

- Section 223(f) Acquisition or Refinance
- Section 221(d) New Construction or Substantial Rehab
- Section 223(a)(7) Refinance of Existing FHA Loans
- Section 241(a) Supplemental Loans for Renovation

#### PROPRIETARY CAPITAL SOLUTIONS

- Bridge Loan Program
- Preferred Equity
- Mezzanine Loans

# UNRIVALED FLEXIBILITY, TAILORED FOR YOU

---

**Lument** is a nationally recognized leader in the multifamily space, with the full scope of agency, FHA, and proprietary loan solutions. Our multifamily professionals are dedicated to seamlessly arranging the right product and terms for your unique business goals. From new construction, to lease up, to permanent financing, value-add, or cash-out refinance – we have your community covered for its lifetime.

## ACCOLADES

---



**#1 FHA LEAN**  
Lender Since 2010



**#1 FHA**  
Multifamily Lender\*



## WE SHINE WITH SERVICE

---

Our team of dedicated multifamily originators and underwriters work across the nation to provide personal, transparent, and trusted customer service. We are firm believers that the close of a transaction is just the beginning of the relationship. To ensure success throughout the life of the loan, we service our entire \$46+ billion loan portfolio in-house, and are committed to cultivating open and consistent communication with our clients. To us, lending means much more than a loan.



## GET IN TOUCH

[LUMENT.COM](https://www.lument.com)